

New Frontiers in Research Fund (NFRF) 2023 Exploration Grant Session

Research Services Office
October 31, 2023

Exploration Stream Objectives

- The objective of the Exploration stream is to support high-risk, high-reward, interdisciplinary research.
- Funding is meant to support projects that:
 - **Bring disciplines together beyond** traditional disciplinary or common interdisciplinary approaches;
 - Propose to **explore something new**, recognizing it **might fail**; and
 - Have the **potential for significant impact**
- **Impacts**
 - Social, artistic, cultural, economic, health-related, technological, national or global in scope
- **Disciplines**
 - Projects can be led by researchers in social sciences and humanities, health, natural sciences, engineering but must be **interdisciplinary**

Value and Duration

- **Competition**
 - National budget of \$25 million over two years
 - Will support at least 100 projects
 - ECRs funded in proportion to #applications from ECRs
 - Success rate: ~16%
- **Project Value** →
 - Up to \$125,000 per year (including indirect costs of up to 25% of direct costs)
 - Eg \$100,000 direct costs and \$25,000 indirect costs
 - Funds are to be used to support research activities (not to acquire or maintain infrastructure)
- **Project Duration** → **up to 2 years**
- **Budget Justification**
 - Provide a breakdown of the direct costs of research only.
 - Provide sufficient details to justify the appropriateness of the budget request.
 - Eligible Expenses must comply with the [Tri-agency Guide on Financial Administration](#)

Interdisciplinarity / Fit to Program

- **Ask Yourself:**

- Does the project fit within the remit of SSHRC, NSERC or CIHR?
- If so, this may not be the program for you.
- If not, consider the interdisciplinary requirements

- **Interdisciplinary requirements:**

- at least two different disciplines ([group-level classification](#) of the [Canada Research and Development Classification Codes](#) (CRDC) not normally combined
 - the onus is on the applicant to explain the novelty of the interdisciplinary approach to justify the fit to the program
- novelty of the approach → application or adaptation of frameworks/tools/methods techniques from one discipline to solve a problem in another discipline
- project design → designed from an interdisciplinary perspective
- fit to program → pushes the boundaries of what can be funded through the agencies

Team Roles

- **Nominated Principal Investigator (NPI)**
 - Responsible for the direction of the project and the coordination of proposed research activities
 - Completes NOI & Full application on Convergence portal
 - Assumes administrative and financial responsibility of the grant
 - Is an independent researcher
- **Co-Principal Investigator (co-PI)**
- Shares responsibilities with NPI, may access grant funds, independent researcher
- **Co-applicants (co-App)**
 - Contributes to the execution of the project, may access grant funds
- **Collaborators**
 - Can be any individual who contributes to the project, does not have access to grant funds

Individuals may participate in only one application to the NFRF Exploration grants stream, as NPI, co-PI or co-app

External Review

- A multidisciplinary review panel composed of national and international members with broad expertise will evaluate the applications
- Each application will be assigned to five members of the multidisciplinary review panel
- More information can be found in the [reviewer manual](#)

Multidisciplinary Review Panel

- The Panel receives the full application
- Adjudication involves scoring according to the evaluation matrices for the selection criteria:
 - Equity, diversity and inclusion – Research Design (EDI-RD) pass/fail
 - Interdisciplinarity / fit to the program pass/fail
 - High risk: 40% of the overall score
 - High reward: 40% of the overall score
 - Feasibility: 20% of the overall score
- More information can be found in the [reviewer manual](#)

High Risk

- proposing unique directions;
- challenging current research paradigms;
- enhancing understanding of complex and challenging issues;
- bringing new disciplines together with different perspectives, to use novel approaches for solving existing problems; and/or
- developing or adapting frameworks, methods & techniques

High Reward

- having economic, scientific, artistic, ideological, cultural, social, technological, environmental or health impact
- transforming and/or disrupting conventional thinking;
- resolving a longstanding issue or debate; and/or
- impacting and/or affecting large communities, or unique communities or subpopulations with the potential to provide lessons for other contexts;
- significantly advancing current knowledge, methods and/or technologies

Feasibility

- Research program being addressed;
- knowledge, expertise and capacity of the research team;
- current research in the field;
- workplan and timeline;
- proposed approach including, EDI in research design (EDI-RD)* where appropriate;
- project's engagement and reciprocity with First Nations, Inuit, and/or Métis peoples (for [Indigenous research](#)), where appropriate; and
- suitability of the research environment

** Referred to as GBA+ in previous exploration competitions*

Equity, Diversity & Inclusion

- EDI is a core element of the NFRF program
- 3 key areas:
 1. Team composition and recruitment processes;
 2. Training and development opportunities; and
 3. Inclusion

For each of the three key areas below, applicants must explain:

- what actions they will take;
- the outcomes expected; and
- the assessment planned
- Actions proposed are expected to:
 - **remove barriers**; and
 - **provide opportunities** for the meaningful integration of individuals from all groups, including the four designated groups (women, Indigenous peoples, members of visible minorities and persons with disabilities).

Refer to the [NFRF Best Practices in Equity, Diversity & Inclusion](#) in Research for more information

Full Application Content

Form pre-populated in Convergence Portal from Nol

- Allows changes – eg new participants (Co-PIs and co-applicants); collaborators, suggested reviewers or reviewer exclusions
- Requires additional details on :
 - Budget,
 - Equity, Diversity and inclusion in research design (EDI-RD),
 - Certifications, Licenses and permits
 - Equity, Diversity and inclusion in research practice (EDI-RP)

Supporting documents

- Four documents uploaded as separate attachments
 - Research Proposal (maximum 4 pages)
 - Biographical information about the research team (maximum 2 pages)
 - Budget justification (maximum 1 page)
 - Literature references (maximum 5 pages)

Supporting Document Attachments

- Documents must be uploaded as separate PDF attachments. Attachments must adhere to the following guidelines:
 - Any acronyms and abbreviations must be explained.
 - Pages must be 8 ½" x 11" (216 mm x 279 mm).
 - Text must be single-spaced, with no more than six lines of type per inch.
 - All text must be in black, using the 11 pt Arial font; condensed fonts will not be accepted.
 - Margins must be set at a minimum of ¾" (1.87 cm).
 - In multi-page attachments, pages must be numbered sequentially.
 - The application identification number (i.e., NFRFx-xxxx-xxxxx) must appear at the top of each page of the attachment.
 - No personally identifying information should be included in the headers and/or footers (e.g., name, PIN, institution, etc.).
 - The name of the document must appear at the top (e.g., Literature References).
 - Tables, graphics and charts can be included. They must comply with the above text formatting requirements (e.g., minimum font size) and fit within the page limits of the relevant document.

Full Application Submission Instructions

Optional editorial review

- As soon as possible advise Jenny Korolik if you want your proposal to be reviewed by RSO editors - due by **November 13, 2023**

Deadlines

- Internal application deadline: Full application must be submitted by NPIs on the Convergence Portal by:
 - **Noon on December 5, 2023**
- Research Services Office completes an admin review
 - Will contact NPI if there are issues with the application to be resolved before submission
- External Application Deadline: RSO submits applications on the Convergence Portal:
 - **8pm (eastern), December 12, 2023**
- **Results & Project Start date**
 - **March 31, 2024** awards announced via the Convergence Portal
 - **March 31, 2024** project start date

CONTACTS AND RESOURCES

Contacts

RSO

Jenny Korolik, Research Funding Manager –
jenny.korolik@utoronto.ca

Kevin Hamilton, Director, Institutional Initiatives –
kevin.hamilton@utoronto.ca

NFRF PROGRAM

NFRF-FNFR@chairs-chaire.gc.ca

WEB SUPPORT

websupport@convergence.gc.ca

613-995-4273

Resources

- NFRF website
<https://www.sshrc-crsh.gc.ca/funding-financement/nfrf-fnfr/exploration/2023/competition-concours-eng.aspx>
- Evaluation Matrices
https://www.sshrc-crsh.gc.ca/funding-financement/nfrf-fnfr/exploration/2023/merit_indicators-indicateurs_du_merite-eng.aspx
- Best Practices in Equity, Diversity and Inclusion in Research
<https://www.sshrc-crsh.gc.ca/funding-financement/nfrf-fnfr/edi-eng.aspx>

Insights Into The NFRF-E Adjudication Process: Strategies for Success

October 31st, 2023

Presented by:

Prof. Barbara Fallon

Associate Vice-President, Research



NFRF-E 2023 Orientation



Application Review

Full Application Adjudication

Evaluate and assign ratings according to the [evaluation matrices](#) for the selection criteria :

- Interdisciplinarity (pass/fail)
- Equity, Diversity and Inclusion (EDI) (pass/fail)
- High Risk (40%)
- High Reward (40%)
- Feasibility (20%)

Within Convergence portal, members will:

- Assess ratings for each criterion
- Provide comments for Interdisciplinarity and EDI (if the score is a fail)
- Identify any areas of concern or comments related to the proposal
- Identify the applications they are most enthusiastic about

NFRF-E 2023 Orientation



Evaluation Criteria and Matrices

Evaluation Matrices

High Risk, High Reward and Feasibility are evaluated using a **7 point scale**.

Calibrate to the matrix and consistently apply the rating indicators.

- Scale intended to be used as a **guide**
 - Not all elements to be considered are listed
 - Do not need to meet “Exceptional” for each element to receive an overall “Exceptional” for the criterion



NFRF-E 2023 Orientation



Evaluation Criteria and Matrices

Interdisciplinarity

	Pass	Fail
Novelty of perspective	Pushes the boundaries in terms of interdisciplinarity, integrating two or more disciplines that are not commonly combined.	Proposes an interdisciplinary approach where there is a long tradition and/or established co-operation/collaboration/interaction between the disciplines. The project is multidisciplinary. It involves more than one discipline but there is a lack of integration between the different disciplinary perspectives or approaches.
Novelty of approach	Proposes the application or adaptation of frameworks/tools/methods/techniques from one discipline to solve a problem in another discipline. (This can also apply to projects where there is a history of collaboration between the disciplines.)	The proposed frameworks/tools/methods/techniques are already in use in, or easily applied to, the second disciplinary area, requiring little adaptation or development.
Project design	Designed from an interdisciplinary perspective.	The project is an interdisciplinary component “added on” to a more conventional project or program of research. The project is designed from a multidisciplinary perspective, where work in several disciplines will be conducted separately rather than through an integrated approach.
Other	-	The application did not adequately establish the interdisciplinary nature of the project.

NFRF-E 2023 Orientation



Evaluation Criteria and Matrices

Interdisciplinarity subcriterion: Fit to Program

	Pass	Fail
Fit to Program	Proposes a project that pushes the boundaries of what can be funded through the agencies, according to their mandates and existing suites of programs, as a result of its high-risk nature and/or interdisciplinary approach.	The scope of the proposed project (subject and approach) fits within the parameters of the mandate and existing suite of programs of one or more of the agencies.

NFRF-E 2023 Orientation



Evaluation Criteria and Matrices

Equity Diversity and Inclusion

- Applicants provide **analysis of EDI**
 - **Identify** challenges and describe EDI context
 - Action plan to **address gaps** and/or update to current measures
- Applicants must address **3 areas** by providing at least **1 concrete practice** to be implemented as well as explanation of application & measurable outcomes (**relevance, approach, and impact**):
 1. Team composition and Recruitment Process
 2. Training and Development Opportunities
 3. Inclusion

NFRF-E 2023 Orientation



Evaluation Criteria and Matrices

EDI Evaluation Criterion

	Pass	Fail
Analysis of context	Clearly demonstrates understanding of EDI considerations/systemic barriers within the context of the research team. Provides a clear explanation of the team's specific challenges/opportunities related to EDI. Cites examples in the analysis. Demonstrates a strong, broad-based commitment to EDI.	Fails to demonstrate an understanding of EDI considerations/systemic barriers within the context of the research team. Provides an analysis of context that is generic and/or not aligned with best practice and/or that does not point to one or more systemic barriers. Lacks evidence of a commitment to and understanding of EDI overall.
Concrete practice for each area	Clearly identifies, at minimum, one concrete practice specific to the context of the research team for each area.	Does not provide a concrete practice for one or multiple areas, and/or provides concrete practices irrelevant to the context of the research team. Challenges are not discussed.
Implementation	Provides a clear and realistic explanation of how the concrete practice(s) has been/will be implemented. Considers implementation challenges.	Lacks an implementation plan or provides an unclear description of the implementation plan. Provides an unrealistic implementation plan.
Impact	Explains how the concrete practice(s) will impact EDI and describes a suitable methodology for measuring success, including specific evaluation criteria.	Does not explain the anticipated impacts that the concrete practice will have on EDI, nor any method for measuring its success.

NFRF-E 2023 Orientation



Evaluation Criteria and Matrices

Guiding Questions for EDI Objectives

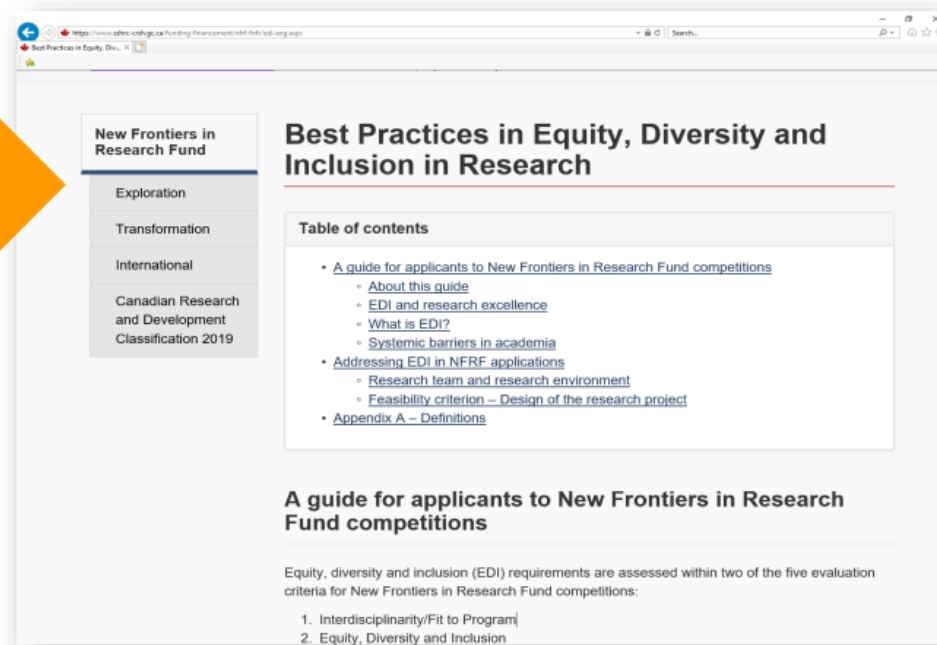
- Has the team **outlined an EDI plan** and provided a clear and apt description of the current EDI challenges of their team and/or institution at large?
- Has the research team **articulated a clear strategy** to integrate EDI with measurable outcomes? How does the team propose to collect better data and metrics on progress of EDI initiatives?
- Does the team's EDI **plan/strategy contain specific commitments** to develop and report on targets and benchmarks, and establish specific expectations and accountabilities for senior-level leadership?
- Has the team **outlined themes and benchmarks** of excellence, goals, outcomes, and directions to help them achieve their vision?
- Have sex, gender and diversity-based analysis been **integrated into research content**? Why or why not?
- Has the team **put in place procedures to ensure training** related to EDI and Unconscious bias awareness? How will they monitor progress and development? Merit indicators?
- What resources will senior researchers **provide to support EDI initiatives** within the team and specifically for groups that are marginalized and/or underrepresented?
- Are there any **opportunities being created** to bring attention to the needs and issues of specific members of our community and to continue to engage members?

NFRF-E 2023 Orientation



Evaluation Criteria and Matrices EDI Section

Refer to the NFRF [Best Practices in Equity, Diversity and Inclusion in Research](#) guide.



EDI Learning Tools and Resources Shared by NFRF

- Best Practices in Equity, Diversity and Inclusion in Research (NFRF October 4, 2019)
<https://www.sshrc-crsh.gc.ca/funding-financement/nfrf-fnfr/edi-eng.aspx>
- GBA+ at CIHR <https://cihr-irsc.gc.ca/e/50968.html>
- GBA+ Training Module at Status of Women Canada <https://cfc-swc.gc.ca/gba-acsc/course-cours-en.html>
- Harvard Implicit Association Test at Project Implicit <https://implicit.harvard.edu/implicit/takeatest.html>
- Henry, F., et al., The Equity Myth (The University of British Columbia, June 2017), especially pp. 263-296.
- Jerry Kang, TED Talk, Immaculate Perception: Introducing the concept of Implicit or Unconscious Bias <https://www.youtube.com/watch?v=9VGbwNI6Ssk>
- McMurtrie, B., “How to do a better job of searching for diversity,” The Chronicle of Higher Education (September 11, 2016). <https://www.csun.edu/sites/default/files/How-to-Do-a-Better-Job-of-Searching-for-Diversity.pdf>
- Scientific American special report titled ‘How Diversity Empowers Science and Innovation’ (2014)
<https://www.scientificamerican.com/report/how-diversity-empowers-science-and-innovation/>
- Unconscious bias training module at Canada Research Chairs <https://www.chairs-chaire.gc.ca/program-programme/equity-equite/bias/module-eng.aspx?pedisable=false>
- WWEST, Gender Diversity 101 (short reports on factors that impact women in science, engineering, technology and trades (SETT)) <http://wwest.mech.ubc.ca/diversity/>

Evaluation Matrix 2021 – Interdisciplinarity

Interdisciplinarity	Can be defined by elements including, but not limited to:	Pass	Fail
	Novelty of perspective	Pushes the boundaries in terms of interdisciplinarity, <u>integrating two or more disciplines that are not commonly combined</u> .	Proposes an interdisciplinary approach where there is a <u>long tradition and/or established co-operation/collaboration/interaction</u> between the disciplines. The project is multidisciplinary. It involves more than one discipline but there is a <u>lack of integration</u> between the different disciplinary perspectives or approaches.
	Novelty of approach	Proposes the <u>application or adaptation of frameworks/tools/methods/techniques from one discipline to solve a problem in another discipline</u> . (This can also apply to projects where there is a history of collaboration between the disciplines.)	The proposed <u>framework/tools/methods/techniques are already in use in or easily applied</u> to the second disciplinary area, <u>requiring little adaptation or development</u> .
	Project design	<u>Designed</u> from an interdisciplinary perspective.	The project is an interdisciplinary component " <u>added on</u> " to a more conventional project or program of research. The project is designed from a multidisciplinary perspective, where <u>work in several disciplines will be conducted separately</u> rather than through an integrated approach.
	Other	-	The application <u>did not adequately</u> establish the interdisciplinary nature of the project.
	Applications are assessed for both "Interdisciplinarity" as per the elements in the table above and "Fit to program" as per the item below separately. They must receive a "Pass" in both to be considered for funding.		
	Fit to program (subcriterion)	Proposes a project that <u>pushes the boundaries of what can be funded through the agencies, according to their mandates and existing suites of programs, as a result of its high-risk nature and/or interdisciplinary approach</u> .	The scope of the proposed project (subject and approach) <u>fits within the parameters of the mandate and existing suite of programs</u> of one or more of the agencies.

Evaluation Matrix 2021 – Equity, Diversity and Inclusion

Equity, Diversity and Inclusion	Projects must pass <u>each</u> of the following elements:	Pass	Fail
	Analysis of context	Clearly demonstrates understanding of EDI considerations/systemic barriers within the context of the research team. Provides a clear explanation of the team's specific challenges/opportunities related to EDI. Cites examples in the analysis. Demonstrates a strong, broad-based commitment to EDI.	Fails to demonstrate an understanding of EDI considerations/systemic barriers within the context of the research team. Provides an analysis of context that is generic and/or not aligned with best practice and/or that does not point to one or more systemic barriers. Lacks evidence of a commitment to and understanding of EDI overall.
	Concrete practice for each area	Clearly identifies, at minimum, one concrete practice specific to the context of the research team for each area.	Does not provide a concrete practice for one or multiple areas, and/or provides concrete practices irrelevant to the context of the research team. Challenges are not discussed.
	Implementation	Provides a clear and realistic explanation of how the concrete practice(s) has been/will be implemented. Considers implementation challenges.	Lacks an implementation plan or provides an unclear description of the implementation plan. Provides an unrealistic implementation plan.
	Impact	Explains how the concrete practice(s) will impact EDI and describes a suitable methodology for measuring success, including specific evaluation criteria.	Does not explain the anticipated impacts that the concrete practice will have on EDI, nor any method for measuring its success.

Evaluation Matrix 2021 – High Risk

High Risk	Can be defined by elements including, but not limited to:	Exceptional	Very good	Fair	Poor
	Unique directions	Develops a <u>completely new theory or paradigms</u> .	Develops a <u>novel concept</u> that <u>bridges established theories in different fields</u> .	Develops a <u>novel concept</u> closely <u>linked to established theories</u> .	Represents an <u>incremental</u> or “logical next step” approach.
	Challenging current paradigms	Aims to <u>radically challenge</u> accepted theories or paradigms.	Aims to <u>challenge</u> accepted theories or paradigms.	Aim to <u>test</u> established theories or paradigms.	Aims to <u>reinforce established</u> theories or paradigms.
	Enhancing our understanding	Aims to <u>extraordinarily enhance</u> our understanding of a complex and challenging issue and/or <u>significantly enhance</u> our understanding of multiple complex and challenging issues.	Aims to <u>significantly enhance</u> our understanding of a complex and challenging issue and/or <u>notably enhance</u> our understanding of multiple complex and challenging issues.	Aims to <u>notably enhance</u> our understanding of a complex and challenging issue.	Aims to <u>incrementally advance</u> our understanding of a complex and challenging issue.
	Novel interdisciplinary approaches	Is at the <u>interface</u> between disciplines, requiring a <u>novel interdisciplinary approach</u> (i.e., two or more disciplines that are not commonly combined). Goes <u>beyond established approaches</u> of any single discipline, bringing together disparate disciplines in new ways.	<u>Crosses</u> disciplinary boundaries and <u>integrates approaches</u> from two or more disciplines.	<u>Crosses</u> disciplinary boundaries <u>using approaches</u> from one or more disciplines.	<u>Crosses</u> disciplinary boundaries, involving two (or more) disciplines that are <u>closely related or commonly crossed</u> . (The interdisciplinary approach is established.)
	Development or adaptation of methods and techniques	Will <u>develop novel</u> methods or techniques.	Will <u>adapt existing</u> methods or techniques to a <u>new field</u> .	Will <u>apply proven methods</u> and techniques in a <u>new context</u> .	Will <u>use proven methods</u> or techniques.
	Other	-	-	-	The application <u>does not adequately establish</u> the high-risk nature of the project.

Evaluation Matrix 2021 – Feasibility

Feasibility	Can be defined by elements including, but not limited to:	Exceptional	Very good	Fair	Poor
	Objectives	The proposed research project is <u>clearly presented</u> and objectives are <u>clearly defined</u> .	The proposed research project is <u>presented adequately</u> and objectives are <u>sufficiently described</u> .	The proposed research project <u>lacks clarity</u> . Objectives are <u>minimally described</u> .	The proposed research project, as presented, <u>lacks clarity</u> . Objectives are <u>not clearly described</u> and/or there are <u>concerns about the likelihood of being able to achieve them</u> .
	Building on current knowledge or prior art	The application demonstrates that the research team is <u>aware</u> of current and relevant research or prior art or knowledge. The proposed research may challenge paradigms, but is built on sound principles.	The application demonstrates that the research team is <u>aware of most</u> current and relevant research, and prior art or knowledge. Knowledge of some developments might be lacking, but this does not impact the feasibility of the proposed research.	The application demonstrates that the research team <u>lacks awareness</u> of relevant research or prior art or knowledge in one aspect/discipline related to the project.	The proposed project <u>does not seem to take into account</u> current and relevant research and prior art or knowledge (for example, proposing approaches that have been tested and failed).
	Work plan	The proposed work plan, including the methodological approach, is <u>well described</u> , <u>reasonable</u> and likely to be <u>achievable</u> within the proposed time frame.	The proposed work plan, including the methodological approach, is <u>described, reasonable</u> and likely to be <u>mostly achievable</u> within the proposed time frame.	The proposed work plan is <u>reasonable</u> . The methodological approach is <u>lacking detail</u> . The project objectives <u>might be met</u> within the proposed time frame.	The proposed work plan is <u>not reasonable/feasible</u> . The methodological approach is <u>missing or flawed</u> . It is <u>unlikely</u> that the project objectives will be met within the proposed time frame.
	Research team	The application <u>clearly demonstrates</u> that the research team <u>has</u> the required expertise in <u>all</u> relevant disciplines to meet the objectives.	The application <u>demonstrates</u> that the research team <u>likely has</u> the required expertise in <u>all</u> relevant disciplines to help meet the objectives.	The application <u>demonstrates</u> that the research team <u>has most</u> of the required expertise, though some aspects may be <u>missing or insufficiently described</u> .	The application <u>does not clearly demonstrate</u> that the research team has all the required expertise to complete the work.
	Resources	The research team has acquired or has concrete plans to acquire <u>the necessary resources</u> to complete the work. <u>All</u> aspects have been described.	The research team has acquired or has concrete plans to acquire <u>the necessary resources</u> to complete the work. <u>Some aspects</u> have <u>not been well described</u> .	The application demonstrates that the research team has acquired or has concrete plans to acquire <u>most of the resources</u> to complete the work. <u>Some aspects</u> may be <u>missing or insufficiently described</u> .	The application <u>does not clearly demonstrate</u> that the research team has acquired or has concrete plans to acquire the necessary resources to complete the work.
	GBA+*	GBA+ has been integrated into the methodological approach (if applicable). The impact on the methodological approach and/or design has been <u>clearly described</u> .	GBA+ has been integrated into the methodological approach (if applicable). The impact on the methodological approach and/or design has been <u>described</u> .	GBA+ has been integrated into the methodological approach (if applicable). The impact on the methodological approach or design has <u>not been described</u> .	GBA+ considerations <u>apply to the project</u> , even though the <u>applicant indicated that they do not</u> . They have <u>not been integrated</u> into the methodological approach or design.
	Indigenous research* Refer to the SSHRC Guidelines for the Merit Review of Indigenous Research	<u>Co-creation, co-leadership and co-ownership with First Nations, Inuit and/or Métis Peoples are clearly integrated in the project's design</u> . The methodological approach and/or theoretical framework <u>successfully incorporate(s) key considerations</u> of SSHRC's Merit Review of Indigenous Research. Attention to <u>equitable processes and procedures for fair and respectful inclusion</u> of Indigenous communities and their perspectives is evident.	<u>Active engagement and reciprocity with First Nations, Inuit and/or Métis Peoples are present and clearly described</u> . Key considerations of SSHRC's Merit Review of Indigenous Research have been incorporated into the methodological approach and/or theoretical framework of the project.	There is <u>modest engagement and reciprocity with First Nations, Inuit and/or Métis Peoples</u> present for Indigenous research or described. There is <u>minimal incorporation</u> of SSHRC's key considerations for the Merit Review of Indigenous Research.	<u>Engagement and reciprocity with First Nations, Inuit and/or Métis Peoples appear to be lacking</u> or have not been described. Key considerations of SSHRC's Merit Review of Indigenous Research have <u>not been incorporated</u> into the methodological approach and/or theoretical framework of the project.

* The overall rating for the Feasibility criterion cannot be higher than the rating of any given element in the matrix. For example, if a reviewer considers most of the elements to be Very Good, but Poor as it relates to either Indigenous research or GBA+, then the overall rating for Feasibility cannot be higher than Poor.



Evaluation Matrix 2021 – High Reward

High Reward	Potential outcomes can be defined by elements including, but not limited to:	Exceptional	Very good	Fair	Poor
	Broad impact*	<u>Significant</u> economic, scientific, artistic, cultural, social, technological or health impact.	<u>Notable</u> economic, scientific, artistic, cultural, social, technological or health impact.	<u>Minor</u> economic, scientific, artistic, cultural, social, technological or health impact.	<u>No</u> economic, scientific, artistic, cultural, social, technological or health impact.
	Reach*	<u>Strong impact</u> on a single or small number of unique communities or subpopulations, with <u>lessons</u> for other contexts, or <u>strong</u> impact on large or multiple communities.	<u>Impact</u> on a single or small number of unique communities or subpopulations, with <u>lessons</u> for others, or <u>impact</u> on large or multiple communities.	<u>Limited impact</u> on a single or small number of unique communities or subpopulations, with either <u>limited</u> or <u>no lessons</u> for others, or <u>limited impact</u> on multiple communities.	<u>No meaningful impact</u> on any unique communities, with <u>limited</u> or <u>no lessons</u> for others, and <u>no impact</u> on multiple communities.
		<u>Significant impact</u> on numerous fields or applications. Developed techniques/methodology will improve research in <u>all integrated disciplines</u> .	<u>Impacts numerous fields</u> or applications. Developed techniques/methodology will improve research in <u>several integrated disciplines</u> .	<u>Impacts primarily one field</u> or application. Developed techniques/methodology will improve research <u>primarily in one discipline</u> .	Has <u>limited impact</u> on a field or application.
	Impact on research or the research community	<u>Resolves</u> a long-standing issue, debate or critical question or questions.	<u>Contributes to resolving</u> a long-standing issue, debate or critical question or questions.	<u>May contribute to resolving</u> a long-standing issue or debate.	<u>Unlikely to affect</u> a long-standing issue or debate.
		<u>Opens</u> a new area of discovery or <u>changes</u> the direction of thought in a discipline or disciplines	<u>Identifies</u> a new area for discovery or <u>challenges</u> the direction of thought in a discipline or disciplines.	<u>May identify</u> a new area for discovery, or a <u>direction to pursue to challenge</u> the direction of thought in a discipline or disciplines.	<u>Unlikely to identify</u> a new area for discovery or challenge the direction of thought in a discipline.
		<u>Will lead to ground-breaking advances</u> in the area and/or <u>significant advancements</u> in current knowledge, methods and/or technologies.	<u>Will lead to significant advancements</u> in the area and/or <u>advancements</u> in current knowledge, methods and/or technologies.	<u>May lead to significant advancements</u> in the area and/or <u>advancements</u> of current knowledge, methods and/or technologies.	<u>Unlikely to lead to significant advancements</u> in the area or in current knowledge, methods and/or technologies.
	Other	-	-	-	The application <u>did not adequately explain</u> the value of the potential outcomes of the project.

* For the "broad impact" and "reach" elements, projects that take place in a single or limited number of geographic communities; with a particular subpopulation or subpopulations; or that focus on a rare disease, can receive Very Good or Exceptional ratings when the potential impact on those affected is significantly high, or if the project team identifies potential applicability/transferability of research results to other contexts. Examples include research undertaken with a single Indigenous community on entrepreneurship and health; with rural, coastal communities on climate change and governance; or with individuals who have a rare chronic illness. In these cases, the size of the community or communities or populations impacted may be small, but the extent of the potential impact is great. As such, this kind of project could be rated favourably by reviewers under the broad impact section. Reach could also be considered Exceptional or Very Good if the proposal clearly articulates how these findings may be applicable to other contexts.