

## NSERC RTI Grant: *Strategies for Success*

September 16, 2022 @ 10:30 am-12:00 pm



**Aimey Bazylak**, Professor,  
Dept. of Mechanical & Industrial  
Engineering



**John Peever**, Professor,  
Dept. of Cell & Systems Biology

register: [cris.utoronto.ca/event/nserc-research-tools-and-instruments-rti-grant-strategies-for-success-sept-16-2022](https://cris.utoronto.ca/event/nserc-research-tools-and-instruments-rti-grant-strategies-for-success-sept-16-2022)



UNIVERSITY OF  
TORONTO

Centre for Research  
& Innovation Support

# NSERC Research Tools and Instruments Grant: Strategies for Success

September 16, 2022, 10:30am-12:00pm

- Thank you for joining us, the session will begin shortly
- You are currently placed on mute
- Reminder: this session will be recorded and transcribed



UNIVERSITY OF  
TORONTO

Centre for Research  
& Innovation Support

## **Prof. Aimy Bazylak**

Professor, Department of Mechanical & Industrial Engineering

## **Prof. John Peever**

Professor, Department of Cell & Systems Biology

## **Jessica Keating**

Research Funding Manager, Natural Sciences and Engineering, Research Services Office

## **Keti Dzamova**

Research Funding Officer,  
Natural Sciences and Engineering,  
Research Services Office

### **NSERC RTI Grant: *Strategies for Success***

September 16, 2022 @ 10:30 am-12:00 pm



**Aimy Bazylak**, Professor,  
Dept. of Mechanical & Industrial Engineering



**John Peever**, Professor,  
Dept. of Cell & Systems Biology

register: [cris.utoronto.ca/event/nserc-research-tools-and-instruments-rti-grant-strategies-for-success-sept-16-2022](https://cris.utoronto.ca/event/nserc-research-tools-and-instruments-rti-grant-strategies-for-success-sept-16-2022)



UNIVERSITY OF  
TORONTO

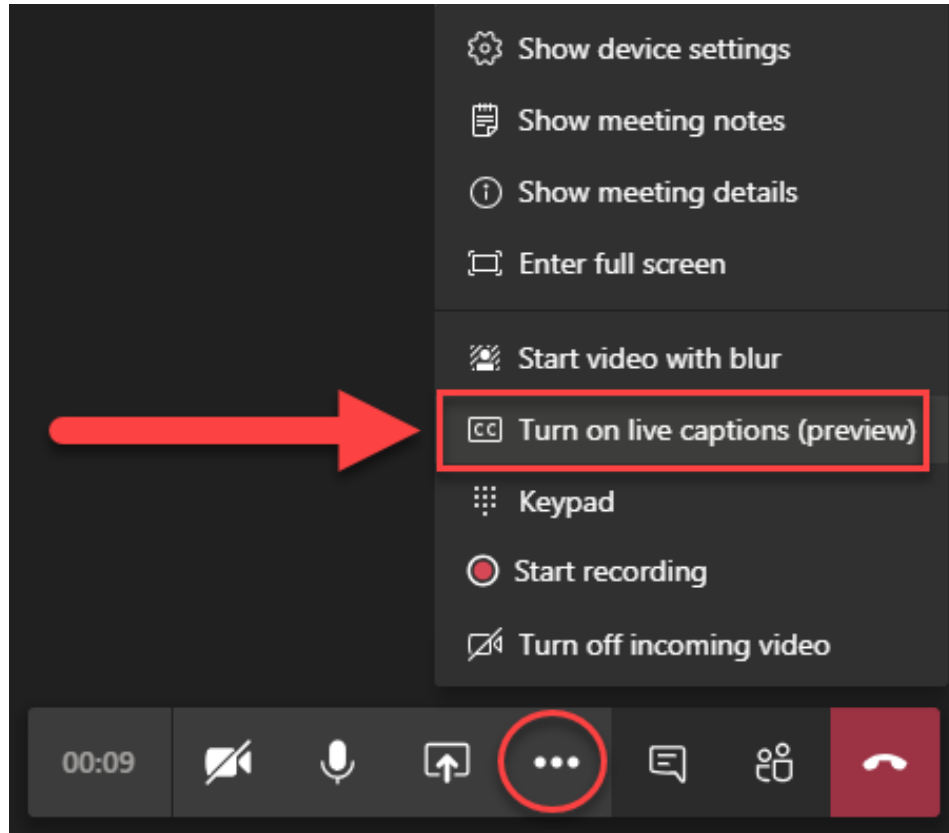
Centre for Research  
& Innovation Support

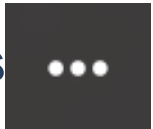


UNIVERSITY OF  
TORONTO

Centre for Research  
& Innovation Support

# Turning captions on and off



- Go to your meeting controls
- Select **More options**  > Turn on/off live captions



# Land Acknowledgement

We wish to acknowledge this land on which the University of Toronto operates.

For thousands of years it has been the traditional land of the Huron-Wendat, the Seneca, and the Mississaugas of the Credit.

Today, this meeting place is still the home to many Indigenous people from across Turtle Island and we are grateful to have the opportunity to work on this land.



# Housekeeping

- This webinar is being recorded & transcribed
- Please mute your audio and turn off your video
- A link to the recording will be sent to all participants after the session
- Presenter slides will also be shared
- We will hold questions until the end
- Please put questions into the chat box



# Agenda

Time	Topic
10:35 am – 11:00 am	Overview of NSERC Discovery Grant with Jessica Keating and Keti Dzamova
11:00 am – 11:20 am	Faculty Panel with Profs. Dr. Aimy Bazylak and Dr. John Peever
11:20 am – 11:55 am	Q&A
11:55 am – 12:00 pm	Closing Remarks



# Presenters



**Aimy Bazylak**

Professor, Department of  
Mechanical &  
Industrial Engineering



**John Peever**

Professor, Department of  
Cell & Systems Biology

**Jessica Keating**

Research Funding Manager,  
Natural Sciences and  
Engineering, Research Services  
Office

**Keti Dzamova**

Research Funding Officer, Natural  
Sciences and Engineering,  
Research Services Office



# RTI COMPETITION

September 16, 2022



# Agenda

- RTI Updates
- RTI Program Objective
- RTI Program Eligibility (equipment, subject matter, and applicants)
- Applying to the RTI program
  - Internal Administration Procedures

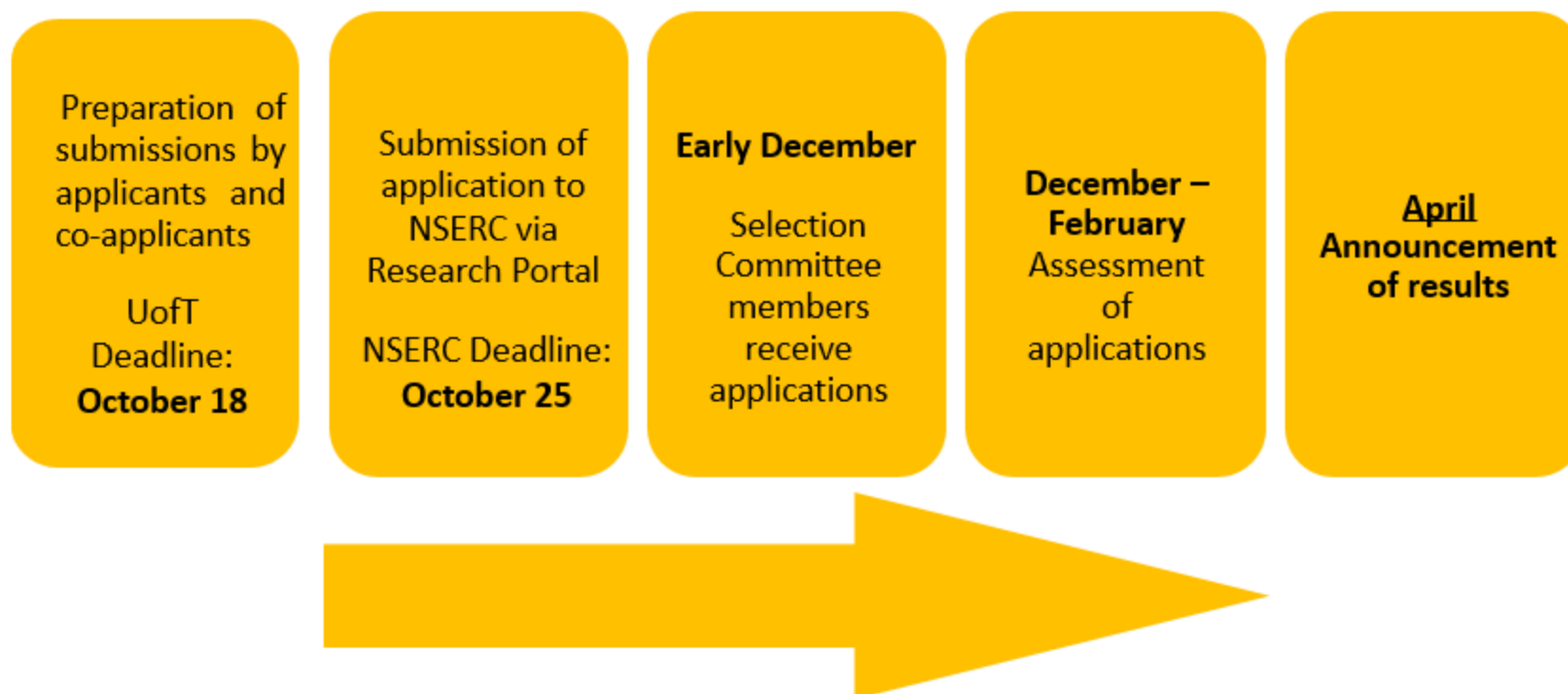
# RTI Program Updates

- RTI grants applicants and co-applicants who were successful in the previous year's RTI competition will be ineligible to apply for one year. Eligibility will be reinstated the following competition year
- Researchers will be able to participate on **one application per competition**, either as an applicant or a co-applicant, but not both
- The excellence of the researcher will no longer be assessed, instead the committee will evaluate the extent to which the research team has relevant experience or present a training plan to demonstrate how they will gain the ability to use the equipment

# RTI Program Updates

- Change to the budget justification instructions to clarify and emphasize that an application will be rejected if the necessary quotations or the budget justification are not submitted with the application
- Additional instructions to specify correct tax and exchange rates in the budget justification
- Budget justification is now a 3-page maximum.
- Confirmation of Financial Contribution documents no longer need to be submitted to NSERC

## RTI Application Cycle



# Program Description

## **RTI Program Objective**

RTI grants foster and enhance the discovery, innovation and training capability of university researchers in the natural sciences and engineering (NSE) by supporting the purchase of research equipment

## **Program Description**

- The RTI Grants Program is a 1-year award that provides the primary avenue for university researchers in the NSE to obtain up to \$150,000 in support for research tools and instruments with a net\* cost between \$7,001 and \$250,000.
- RTI applications must be for the purchase, repair, rental or manufacturing of equipment that is not readily available off the shelf

\*Here, net cost is defined as the purchase cost of the equipment after any discount from the vendor and before taxes, customs and importation fees, transportation and shipping charges, and assembly and installation costs

## Program Description (cont.)

- The vendor discount must be free of conditions, restrictions or limitations. In other words, it cannot be offered in exchange for services from users benefiting the vendor company.
- The research community is also encouraged to explore other avenues for funding research tools and instruments, including NSERC's other programs that allow the purchase of equipment as eligible expenses, such as the Discovery Grants program.

# Application process RTI

Deadline: **October 25** (Mandatory) via Research Portal

**A complete submission includes:**

- Proposal (limit of four pages)
- Budget Justification (limit of three pages)
- Two (2) recent quotations for any items or any systems costing more than \$25,000 before taxes

\*Cash contributions

Indicate any cash contributions, if applicable. A cash contribution is financial support provided by another source of funding, such as a university, industry or other sources. A vendor discount is not a cash contribution.

- NSERC Researcher CCV for each applicant and co-applicants

## RTI Application Content

Section	2023 Competition	Completed by
Summary of proposal	Max. 3000 characters (1/2 page)	Applicant
Time to be devoted to research/activity	In hours per month	Applicant & Co-applicants
Proposal	Limit of <b>four</b> pages (PDF)	Applicant
Budget Justification	Limit of <b>three</b> pages (PDF)	Applicant
Relationship to other source of support (explanation)	Explain in <b>Budget Justification</b>	
Two Quotations	2 quotations in PDF, 10Mb each (for items more than \$25,000)	Applicant
*Confirmation of financial contributions	PDF (File size limit of 10Mb)	Applicant

# Application Procedures RTI

- ✓ **Internal processes**
  - ✓ PIs and Co PIs Eligibility
  - ✓ My Research Application (MRA)
- ✓ **Submitting applications on the NSERC Research Portal**
  - ✓ Checking application for completeness and
    - ✓ If there are two quotes included for the RTI application for equipment over \$25,000
    - ✓ Budget totals on page 1 must be consistent with the bottom of the 'Proposed Expenditures for Direct Costs of Research' (Minimum budget \$7,001, Maximum \$250,000 of which only \$150,000 can be requested from NSERC)
    - ✓ If 'Budget Justification' have the Relationship to other research support
    - ✓ Applicants and co-applicants who were successful in the previous year's RTI competition will be ineligible to apply for one year.
    - ✓ Forwarding the application to NSERC, by NSERC deadline

# Proposal RTI

**A. Summary of Proposal** (limit of 3000 characters)

Summarize proposal in plain language that the public can understand. It will be available to the public if your proposal is funded.

**B. Proposal** (limit of four pages)

Refer to the 3 Selection Criteria section of the RTI program description. The applicant prepares the proposal with input from co-applicants, as required.

# Proposal RTI

## C. Budget Justification (limit of three pages)

- Explain and justify each budget item in the RTI Proposal
- Provide a breakdown of items requested; detailing the model, manufacturer, prices, exchange rates, and applicable taxes;

\*To convert to Canadian currency, you must use an exchange rate consistent with the Bank of Canada rate at the time of application. Ensure that tax rates (i.e., applicable exemptions or rebates) used in the budget are consistent with the tax rates used by U of T which is **3.41%**.

- Explain all financial contributions from industry, university or other sources towards purchase of equipment

# Proposal RTI

## C. Budget Justification (limit of three pages)

- Provide a detailed explanation and justification for each budget item identified in the Proposed expenditures page. Provide sufficient information to allow reviewers to assess whether the items requested are appropriate, including details on models and manufacturers

### Budget Table Template

Item	Quantity	Cost per unit in original currency	Exchange rate	Total cost in Canadian dollars
Subtotal:				
Institutional tax rate (%):				
Total tax:				
Total cost:				
Total confirmed from other source(s):				
Total requested from NSERC:				

# Proposal RTI

## **C. Budget Justification (limit of three pages)**

Relationship to other research support

- Explain any relationship and/or overlap (conceptual or financial) between equipment supported by other funding sources and the current application
- Provide sufficient information to enable the reviewers to assess the relationship between this application and other sources of support, including those of co-applicants

# Application Procedures

## Checklist

### ✓ **Step 1: Eligibility**

- ✓ Ensure that you meet NSERC's eligibility criteria: and PI must currently hold\*, or be applying\* for one of the following NSERC research grants at the time of application list follows(list provided in next slide)
- ✓ Ensure you are eligible to hold a research grant at UofT

### ✓ **Step 2: My Research Application (MRA)**

- ✓ Internal electronic approval form required for all grant applications submitted through UofT
- ✓ Must be received by Research Services no later than October 18, 2022, 9:00am

### ✓ **Step 3: Application and CCV**

- ✓ Complete application on the Research Portal
- ✓ Complete CCV on CCV website
- ✓ Link CCV to Research Portal and submit by 9:00am October 25, 2022

# RTI Application Procedures

## Step 1: Eligibility

- ✓ The PI hold, or have a firm offer of, an academic appointment at a Canadian Institution (minimum three-year position or tenure track) as of September 1, 2023
- ✓ Be in a position that requires independent research and allows supervision of HQP
- ✓ To be eligible to apply for RTI, the applicant and co-applicants must currently hold\*, or be applying\* for one of the following NSERC research grants at the time of application: Alliance grant, Canada Excellence Research Chairs, Canada 150 Research Chairs, Canada Research Chairs, Collaborative Research and Development grant, Discovery Development grant, Discovery Grant, Discovery Horizons grant, Industrial Research Chairs grant, Strategic Partnership grant
- ✓ Applicants and co-applicants are responsible for ensuring they meet NSERC eligibility criteria for the RTI program

# RTI Application Procedures

## Step 1: Eligibility

- ✓ Applicants and co-applicants are responsible for ensuring they meet NSERC eligibility criteria for the RTI program which include:
  - ✓ Appointment eligibility
  - ✓ Program eligibility
  - ✓ Competition eligibility

# RTI Application Procedures

## Step 2: Application MRA

- ✓ Internal electronic approval form required for all grant applications submitted through U of T
- ✓ Must be received by Research Services no later than October 18, 2022, 9:00am

# RTI Application Procedures

## Step 3: Application on Research Portal

- ✓ Ensure you have completed and finalized your application on NSERC's Research Portal.
- ✓ Once finalized and completed, link your CCV to your application and verify.
- ✓ Submit to Research Services by clicking on the "Submit" button by no later than 9:00am on October 25, 2022, if not earlier.
- ✓ Once received by Research Services, your application will be approved and submitted to NSERC.

# Important Links - RTI Program

**RTI Peer Review Manual:**

[http://www.nserc-crsng.gc.ca/NSERC-CRSNG/Reviewers-Examineurs/IntroPRManual-IntroManuelEP\\_eng.asp](http://www.nserc-crsng.gc.ca/NSERC-CRSNG/Reviewers-Examineurs/IntroPRManual-IntroManuelEP_eng.asp)

**RTI Program Description:**

[http://www.nserc-crsng.gc.ca/Professors-Professeurs/RTII-OIRI/RTI-OIR\\_eng.asp](http://www.nserc-crsng.gc.ca/Professors-Professeurs/RTII-OIRI/RTI-OIR_eng.asp)

**RTI Program Instructions:**

[http://www.nserc-crsng.gc.ca/ResearchPortal-PortailDeRecherche/Instructions-Instructions/RTIInstruct-SOIInstruct\\_eng.asp](http://www.nserc-crsng.gc.ca/ResearchPortal-PortailDeRecherche/Instructions-Instructions/RTIInstruct-SOIInstruct_eng.asp)

**RTI Frequently Asked Questions:**

[http://www.nserc-crsng.gc.ca/\\_doc/Reviewers-Examineurs/RTIFAQ-OIRFAQ\\_eng.pdf](http://www.nserc-crsng.gc.ca/_doc/Reviewers-Examineurs/RTIFAQ-OIRFAQ_eng.pdf)

# Important Links - Subject Matter Eligibility

## **Selecting the Appropriate Federal Granting Agency:**

[https://www.ic.gc.ca/eic/site/063.nsf/eng/h\\_FEE7261A.html](https://www.ic.gc.ca/eic/site/063.nsf/eng/h_FEE7261A.html)

## **Clarifications to the Government of Canada guidelines on selecting the appropriate federal granting agency:**

• [https://www.ic.gc.ca/eic/site/063.nsf/eng/h\\_FEE7261A.html](https://www.ic.gc.ca/eic/site/063.nsf/eng/h_FEE7261A.html)

## **Addendum to the guidelines for the eligibility of applications related to health:**

• [http://www.nserc-crsng.gc.ca/NSERC-CRSNG/policies-politiques/Addendum-Addenda\\_eng.asp](http://www.nserc-crsng.gc.ca/NSERC-CRSNG/policies-politiques/Addendum-Addenda_eng.asp)

# Important Links -Procedures

## **Canadian Common CV – How to Complete NSERC's Version:**

[https://www.nserc-crsng.gc.ca/ResearchPortal-PortailDeRecherche/Instructions-Instructions/ccv-cvc\\_eng.asp](https://www.nserc-crsng.gc.ca/ResearchPortal-PortailDeRecherche/Instructions-Instructions/ccv-cvc_eng.asp)

## **Research Portal FAQ:**

[https://www.nserc-crsng.gc.ca/ResearchPortal-PortailDeRecherche/FAQ-FAQ/ResearchPortal-PortailDeRecherche\\_eng.asp](https://www.nserc-crsng.gc.ca/ResearchPortal-PortailDeRecherche/FAQ-FAQ/ResearchPortal-PortailDeRecherche_eng.asp)

## **Guide for Applicants:**

- [Considering equity, diversity and inclusion in your application.](#)

# NSERC CCV Contact and recourses

- ❖ If you are having technical troubles with the CCV, please contact:  
On-line Services Helpdesk  
Telephone: 613-995-4273  
Monday to Friday: 8:30 AM to 4:30 PM (EST)  
Email: [webapp@nserc-crsng.gc.ca](mailto:webapp@nserc-crsng.gc.ca)
- ❖ Help Manual: <https://ccv-cvc.ca/researcher-help-en.htm>
- ❖ How to Videos: <https://ccv-cvc.ca/indexresearcher-eng.frm>

## NSERC contacts

- ❖ If you are having technical troubles please contact:
  - On-line Services Helpdesk
  - Telephone: 613-995-4273
  - Monday to Friday: 8:30 AM to 4:30 PM (EST)
  - Email: [webapp@nserc-crsng.gc.ca](mailto:webapp@nserc-crsng.gc.ca)
- ❖ Research Tools & Instruments (RTI) general email: [resgrant@nserc-crsng.gc.ca](mailto:resgrant@nserc-crsng.gc.ca)

## Your Contacts at RSO

- ❖ Jessica Keating, Research Funding Manager  
[jessica.keating@utoronto.ca](mailto:jessica.keating@utoronto.ca)
- ❖ Keti Dzamova, Research Funding Officer  
[Keti.dzamova@utoronto.ca](mailto:Keti.dzamova@utoronto.ca)
- ❖ Kitishia-Trista Cordner, Research Funding Administrator  
[kitishia.cordner@utoronto.ca](mailto:kitishia.cordner@utoronto.ca)

Website: [www.research.utoronto.ca](http://www.research.utoronto.ca)

Address: 3rd Floor, McMurrich Bldg,  
12 Queen's Park Crescent W.  
Toronto, ON M1S 1S8

# ROUND 1

What was the overall adjudication process like for you as a member of your sub-committee?

- ☐ What instructions were you provided as a reviewer?
- ☐ What evaluation criteria were you asked to use?



# Overview of the RTI Panel

- The following discussion outlines my individual experience on the RTI panel - *Biological, Systems and Functions*
- Each application is reviewed by 4-5 panelists
- No discussion between panelists
- No written reviews; scoring sheet only
- Applications are scored in 3 core areas
- CV's given little to no consideration
- Each reviewer assess 30-35 applications

# Overview of RTI Review Criteria

RTI Scoring Spreadsheet - 2022 Competition			
Sheet Language:	English	Deadline to Submit:	28-Jan-22
Program Officer:		Committee Name:	1602 - Biological, Systems and Functions
<b>Instructions</b> <ul style="list-style-type: none"><li>• Please use the range of scoring options to provide a broad distribution in the overall ranking: Make sure that the most meritorious applications receive the highest scores (9 or 10) and weak applications receive low scores (1 or 2). Please do not use decimals. An average application should receive a 5 or 6.</li><li>• When done, ensure that the number of applications you scored, "Total Scored", matches the number of applications you were assigned, "Total Assigned". You must give a score to all applications assigned to you.</li></ul>			

# Overview of RTI Review Criteria

Scoring (1 [lowest] to 10 [highest])				
40%	40%	20%		
(1) Need, urgency and suitability	(2) Feasibility and Impact	(3) Training of highly qualified personnel (HQP)		
			Weighted Total (calculated)	Scoring Complete for This Application

# Overview of RTI Review Criteria

EDI Considerations		
Was EDI mentioned in regards to (2) Feasibility and Impact	Was EDI mentioned with regards to (3) Training of highly qualified personnel (HQP)	Did the EDI considerations from (3) Training of highly qualified personnel (HQP) favorably factor into the final score for this criterion?

# Overview of RTI Review Criteria

Scoring Summary and Guidelines											
Cells in this section with sets of scores that exceed the maximum allowed will turn red. Please avoid having any red cells.						Total Assigned:		20	Total Scored:		20
Scores		1	2	3	4	5	6	7	8	9	10
Maximum percentage of applications with given score(s)	(120%)	10%	20%		30%		30%		20%		10%
Maximum number of applications allowed with given score(s)	(20)	2	4		6		6		4		2
(1) Need, urgency and suitability		0	4		5		6		4		1
(2) Feasibility and Impact		0	4		6		5		4		1
(3) Training of highly qualified personnel (HQP)		0	4		6		4		4		2

# RTI Grant Structure

## **A. Need, urgency and suitability of the requested equipment for our research programs:**

The Research Program(s) to be supported:

\*Team Collaborations:

## **B. Feasibility and Impact:**

## **C. Importance of proposed equipment for training of highly qualified personnel:**

The research program supported by the new equipment promotes equity, diversity and inclusion (EDI) in all aspects of research.

## **D. Budget Justification**

RELATIONSHIP TO OTHER RESEARCH SUPPORT

## ROUND 2

□ What are some things you wish you had known from your insider perspective as a successful applicant?



# Perspectives as an applicant

## **Prof. Aimy Bazylak**

Canada Research Chair in Thermofluidics for Clean Energy  
Professor, Dept. of Mechanical & Industrial Engineering  
Interim Director, Division of Engineering Science  
Faculty of Applied Science & Engineering  
University of Toronto



**UNIVERSITY OF TORONTO**  
FACULTY OF APPLIED SCIENCE & ENGINEERING

## General points

- *Each application is assessed by up to five Selection Committee members*
- *There are no external reviewers for the RTI program.*
- Write for the non-specialist
- Assume the reviewers are tired, busy, and grumpy
  - Spoon-feed them!



# Read this, especially the last page



## Research Tools and Instruments Peer review manual

2022-23

2<sup>nd</sup> year with this  
criteria (changed  
in 2021-2022  
cycle)

[https://www.nserc-crsng.gc.ca/professors-professeurs/rtii-oiri/rti-oir\\_eng.asp](https://www.nserc-crsng.gc.ca/professors-professeurs/rtii-oiri/rti-oir_eng.asp)

## Appendix A – Assessment notes template Research Tools and Instruments grant application

Applicant		Department/University	
Title of Proposal		Amount Requested: \$	
<b>EVALUATION CRITERIA</b>			
1. Need, urgency and suitability (40%)			/10
<ul style="list-style-type: none"> <li>Demonstration that the equipment is essential for the research, and that there are no other most cost-effective ways of obtaining the results;</li> <li>Availability of similar equipment/facilities/services in the vicinity;</li> <li>The impact of a delay in acquisition of equipment on the research and the pace of research progress;</li> <li>Need to upgrade or replace obsolete or failed equipment; and</li> <li>Degree of utilization of the equipment by the applicant(s) and other users.</li> </ul>			
2. Feasibility and Impact (40%)			/10
<ul style="list-style-type: none"> <li>Quality and significance of the research program(s), including potential for major advances and impact in the discipline as a result of the equipment;</li> <li>Feasibility of the plan to use the equipment; and</li> <li>Extent to which the applicant(s) has relevant experience or has presented a training plan to demonstrate how they will gain the ability to fully use the equipment.</li> <li>Consideration of equity, diversity and inclusion in the rationale of the team composition (applicant and co-applicant(s)).</li> </ul>			
3. Training of highly qualified personnel (HQP) (20%)			/10
<ul style="list-style-type: none"> <li>Quality and extent of training;</li> <li>Opportunity for hands-on training; and</li> <li>Potential to provide marketable skills for students trained on the equipment.</li> <li>Consideration of equity, diversity and inclusion in the training of HQP.</li> </ul>			
<b>OTHER CONSIDERATIONS</b>			
Eligibility of the subject matter			
Eligibility of the equipment and expenses			
Partial funding recommendation (rare)			
<b>OTHER NOTES</b>			

# Selection Criteria

- Write for the evaluation criteria
- *Members will provide scores for each criterion from 1 (lowest) to 10 (highest).*
- *Once NSERC receives the scores from all members, NSERC staff will enter scores into a spreadsheet and rank applications based on the average weighted totals.*

Applicant		Department/University	
Title of Proposal		Amount Requested: \$	
EVALUATION CRITERIA			
1. Need, urgency and suitability (40%)			/10
<ul style="list-style-type: none"> <li>▪ Demonstration that the equipment is essential for the research, and that there are no other most cost-effective ways of obtaining the results;</li> <li>▪ Availability of similar equipment/facilities/services in the vicinity;</li> <li>▪ The impact of a delay in acquisition of equipment on the research and the pace of research progress;</li> <li>▪ Need to upgrade or replace obsolete or failed equipment; and</li> <li>▪ Degree of utilization of the equipment by the applicant(s) and other users.</li> </ul>			
2. Feasibility and Impact (40%)			/10
<ul style="list-style-type: none"> <li>▪ Quality and significance of the research program(s), including potential for major advances and impact in the discipline as a result of the equipment;</li> <li>▪ Feasibility of the plan to use the equipment; and</li> <li>▪ Extent to which the applicant(s) has relevant experience or has presented a training plan to demonstrate how they will gain the ability to fully use the equipment.</li> <li>▪ Consideration of equity, diversity and inclusion in the rationale of the team composition (applicant and co-applicant(s)).</li> </ul>			
3. Training of highly qualified personnel (HQP) (20%)			/10
<ul style="list-style-type: none"> <li>▪ Quality and extent of training;</li> <li>▪ Opportunity for hands-on training; and</li> <li>▪ Potential to provide marketable skills for students trained on the equipment.</li> <li>▪ Consideration of equity, diversity and inclusion in the training of HQP.</li> </ul>			
OTHER CONSIDERATIONS			
Eligibility of the subject matter			
Eligibility of the equipment and expenses			
Partial funding recommendation (rare)			
OTHER NOTES			

# 2019



The Selection Committee evaluated a total of 104 applications and awarded the 22 top-ranked applications for a success rate of 21.2 % and a funding rate of 21.4%. / Le Comité de sélection a évalué 104 demandes et retenu les 22 demandes les mieux classées pour un taux de réussite de 21,2 % et un taux de financement de 21,4 %.

The evaluation of each application was based on three weighted criteria. The results of the evaluation of your application are as follows: / Les demandes de subvention sont évaluées en fonction des trois critères pondérés. Les résultats de l'évaluation de votre demande sont les suivants:

Selection Criteria / Critères de sélection	Average Score / Note moyenne
Need, urgency and suitability of equipment for the research programs / Besoin, urgence et pertinence de l'appareil en fonction du ou des programmes de recherche (40%)	8.80 / 10
Merit of the research programs supported by the equipment and excellence of the applicant(s) / Mérite des programmes de recherche auxquels servira l'appareil et excellence du ou des candidats (40%)	8.80 / 10
Importance of the equipment for the training of highly qualified personnel (HQP) / Importance de l'appareil pour la formation de personnel hautement qualifié (PHQ) (20%)	8.40 / 10
Overall Application Score / Note globale de la demande	8.72 / 10
Application Rank / Classement de la demande	3 / 104

Selection Committees do not prepare written comments or feedback for RTI applications. / Les comités de sélection ne préparent pas de commentaires écrits pour les demandes de subventions d'OIR.

# 2020



The Selection Committee evaluated a total of 88 applications and awarded the 24 top-ranked applications for a success rate of 27.3% and a funding rate of 28.7 %. / Le Comité de sélection a évalué 88 demandes et retenu les 24 demandes les mieux classées pour un taux de réussite de 27,3 % et un taux de financement de 28,7 %.

The evaluation of each application was based on three weighted criteria. The results of the evaluation of your application are as follows: / Les demandes de subvention sont évaluées en fonction des trois critères pondérés. Les résultats de l'évaluation de votre demande sont les suivants:

Selection Criteria / Critères de sélection	Average Score / Note moyenne
Need, urgency and suitability of equipment for the research programs / Besoin, urgence et pertinence de l'appareil en fonction du ou des programmes de recherche (40%)	7.60 / 10
Merit of the research programs supported by the equipment and excellence of the applicant(s) / Mérite des programmes de recherche auxquels servira l'appareil et excellence du/de la ou des candidat(e)s (40%)	8.40 / 10
Importance of the equipment for the training of highly qualified personnel (HQP) / Importance de l'appareil pour la formation de personnel hautement qualifié (PHQ) (20%)	7.80 / 10
Overall Application Score / Note globale de la demande	7.96 / 10
Application Rank / Classement de la demande	6 / 88

Selection Committees do not prepare written comments or feedback for RTI applications. / Les comités de sélection ne préparent pas de commentaires écrits pour les demandes de subventions d'OIR.

# 2021



The Selection Committee evaluated a total of 74 applications and awarded the 18 top-ranked applications for a success rate of 24.3 % and a funding rate of 25.2 %. / Le Comité de sélection a évalué 74 demandes et retenu les 18 demandes les mieux classées pour un taux de réussite de 24,3 % et un taux de financement de 25,2 %.

The evaluation of each application was based on three weighted criteria. The results of the evaluation of your application are as follows: / Les demandes de subvention sont évaluées en fonction des trois critères pondérés. Les résultats de l'évaluation de votre demande sont les suivants:

<b>Selection Criteria / Critères de sélection</b>	<b>Average Score / Note moyenne</b>
Need, urgency and suitability of equipment for the research programs / Besoin, urgence et pertinence de l'appareil en fonction du ou des programmes de recherche (40%)	6.80 / 10
Merit of the research programs supported by the equipment and excellence of the applicant(s) / Mérite des programmes de recherche auxquels servira l'appareil et excellence du/de la ou des candidat(e)s (40%)	9.60 / 10
Importance of the equipment for the training of highly qualified personnel (HQP) / Importance de l'appareil pour la formation de personnel hautement qualifié (PHQ) (20%)	6.60 / 10
Overall Application Score / Note globale de la demande	7.88 / 10
Application Rank / Classement de la demande	5 / 74

# 2022



The Selection Committee evaluated a total of 63 applications and awarded the 18 top-ranked applications for a success rate of 28.6% and a funding rate of 29.0%.

The evaluation of each application was based on three weighted criteria. The results of the evaluation of your application are as follows:

Selection Criteria	Average Score
Need, urgency and suitability (40%)	6.20 / 10
Feasibility and impact (40%)	6.20 / 10
Training of highly qualified personnel (HQP) (20%)	5.00 / 10
Overall Application Score	5.96 / 10
Application Rank	37 / 63

Selection Committees do not prepare written comments or feedback for RTI applications.

2021

Real-time 3D imaging for  
clean electrochemical  
energy conversion

My headings!

Keep in mind the changes in case you  
are looking at past examples from your  
colleagues

Appendix A – Assessment notes template

Research Tools and Instruments grant application

Applicant		Department/University	
Title of Proposal		Amount Requested: \$	
EVALUATION CRITERIA			
1. The need, urgency and suitability of equipment for the research programs. (40%)		/10	
<div><div>▪ Demonstration that the equipment is essential for the research, and that there are no other most cost-effective ways of obtaining the results;</div><div>▪ Availability of similar equipment/facilities/services in the vicinity;</div><div>▪ The impact of a delay in acquisition of equipment on the research and the pace of research progress;</div><div>▪ Need to upgrade or replace obsolete or failed equipment; and</div><div>▪ Degree of utilization of the equipment by the applicant(s) and other users.</div></div>			
2. Merit of the research programs supported by the equipment and excellence of the applicant(s). (40%)		/10	
<div><div>▪ Quality and significance of research programs, including potential for major advances and impact in the discipline as a result of the equipment;</div><div>▪ Feasibility of the plan to use the equipment; and</div><div>▪ The excellence of the applicant(s), including scientific or engineering calibre of the applicant(s) and extent to which the applicant(s) has relevant experience and demonstrated ability to fully use the equipment.</div><div>▪ Consideration of equity, diversity and inclusion in the rationale of the team composition (applicant, co-applicant(s), and major users).</div></div>			
3. Importance of the equipment for the training of highly qualified personnel (HQP). (20%)		/10	
<div><div>▪ Quality and extent of training;</div><div>▪ Opportunity for hands-on training; and</div><div>▪ Potential to provide marketable skills for students trained on the equipment.</div><div>▪ Consideration of equity, diversity and inclusion in the training of HQP.</div></div>			
OTHER CONSIDERATIONS			
Eligibility of the subject matter			
Eligibility of the equipment and expenses			
Partial funding recommendation (rare)			
OTHER NOTES			

# THIS COMPETITION: 2023

Use these headings!

1. Introduction
2. Need, urgency, and suitability
3. Feasibility and Impact
4. Training of HQP

## Appendix A – Assessment notes template Research Tools and Instruments grant application

Applicant		Department/University	
Title of Proposal		Amount Requested: \$	
<b>EVALUATION CRITERIA</b>			
1. Need, urgency and suitability (40%)			/10
<ul style="list-style-type: none"> <li>Demonstration that the equipment is essential for the research, and that there are no other most cost-effective ways of obtaining the results;</li> <li>Availability of similar equipment/facilities/services in the vicinity;</li> <li>The impact of a delay in acquisition of equipment on the research and the pace of research progress;</li> <li>Need to upgrade or replace obsolete or failed equipment; and</li> <li>Degree of utilization of the equipment by the applicant(s) and other users.</li> </ul>			
2. Feasibility and Impact (40%)			/10
<ul style="list-style-type: none"> <li>Quality and significance of the research program(s), including potential for major advances and impact in the discipline as a result of the equipment;</li> <li>Feasibility of the plan to use the equipment; and</li> <li>Extent to which the applicant(s) has relevant experience or has presented a training plan to demonstrate how they will gain the ability to fully use the equipment.</li> <li>Consideration of equity, diversity and inclusion in the rationale of the team composition (applicant and co-applicant(s)).</li> </ul>			
3. Training of highly qualified personnel (HQP) (20%)			/10
<ul style="list-style-type: none"> <li>Quality and extent of training;</li> <li>Opportunity for hands-on training; and</li> <li>Potential to provide marketable skills for students trained on the equipment.</li> <li>Consideration of equity, diversity and inclusion in the training of HQP.</li> </ul>			
<b>OTHER CONSIDERATIONS</b>			
Eligibility of the subject matter			
Eligibility of the equipment and expenses			
Partial funding recommendation (rare)			
<b>OTHER NOTES</b>			

# Title

Accessible, exciting (action), hint to impact

## **Examples:**

- “Real-time 3D imaging for clean electrochemical energy conversion”
- “A fabrication, testing, and imaging laboratory for all solid-state batteries”
- “Accelerated catalyst layer design and fabrication: Materials discovery through machine learning”

# Introduction

- Who cares?
- Need to get you interested
- What will you do?
- What equipment are you asking for?

# Need urgency and Suitability

- Don't just say you *need* it.
- What would you otherwise be limited to doing if you didn't have it?
- What new directions can you take if you had this equipment?

1. Need, urgency and suitability (40%)
▪ Demonstration that the equipment is essential for the research, and that there are no other most cost-effective ways of obtaining the results;
▪ Availability of similar equipment/facilities/services in the vicinity;
▪ The impact of a delay in acquisition of equipment on the research and the pace of research progress;
▪ Need to upgrade or replace obsolete or failed equipment; and
▪ Degree of utilization of the equipment by the applicant(s) and other users.

“Prof. Bazylak currently does not have any means of fabricating tailored catalyst layers, and without the proposed equipment, her work will be strictly limited to the numerical modelling of catalyst layers that will lack validation under realistic conditions.”

# Feasibility and Impact

- Impact – measurable (not just “enhance” “investigate” “study”)
  - Who cares?
- Do you know how to use the equipment? How will you get the skills to do it?
- EDI

2. Feasibility and Impact (40%)
▪ Quality and significance of the research program(s), including potential for major advances and impact in the discipline as a result of the equipment;
▪ Feasibility of the plan to use the equipment; and
▪ Extent to which the applicant(s) has relevant experience or has presented a training plan to demonstrate how they will gain the ability to fully use the equipment.
▪ Consideration of equity, diversity and inclusion in the rationale of the team composition (applicant and co-applicant(s)).

# HQP & EDI

- Don't gloss over this
- Be genuine
- I have X# of women in my group. <- No

<b>3. Training of highly qualified personnel (HQP) (20%)</b>
▪ Quality and extent of training;
▪ Opportunity for hands-on training; and
▪ Potential to provide marketable skills for students trained on the equipment.
▪ Consideration of equity, diversity and inclusion in the training of HQP.

# Relationship to other research support (Example)




- Version 1:

There is no overlap in funding, within this project objectives and tasks. Other funding sources in the Bazylak lab are not allocated to any of the studies proposed here.

- Version 2:

There is no overlap in funding, within this project objectives and tasks. Other funding sources in the Bazylak lab are not allocated to any of the studies proposed here; however, Prof. Bazylak's well-supported research in porous materials for clean electrochemical energy is highly synergistic with respect to the fundamental science needed for the proposed work. Therefore, Prof. Bazylak is well-positioned to lead the proposed work with Dr. XXXXX.

# Q & A – How to ask questions

- Please use the chat
- Click on the  icon in the bottom menu to bring up the Meeting Chat pop-out window
- Type your question and hit Enter on your keyboard or click the  button to submit.
- We will **not** be using the “Raise your hand”  feature.

*Please note: You may be asked to Unmute to clarify your question*



# Upcoming Event:

## Webinar and Discussion – Addressing EDI Considerations in Your NSERC Discovery/RTI Application

**Date: Sept. 20, 2022  
11:00 am - 12:00 pm**

## Addressing EDI Considerations in your NSERC Discovery/RTI Application

September 20, 2022 @ 11:00 am-12:00 pm

### With

**Andrea Gill**, PhD, Research Equity  
and Diversity Strategist, Research  
Services Office

**register:** [cris.utoronto.ca/event/addressing-edi-considerations-in-your-nserc-discovery-rti-application-sept-20-2022](https://cris.utoronto.ca/event/addressing-edi-considerations-in-your-nserc-discovery-rti-application-sept-20-2022)



Centre for Research  
& Innovation Support

[cris.utoronto.ca/rdf/programs/](https://cris.utoronto.ca/rdf/programs/)



UNIVERSITY OF  
TORONTO

Centre for Research  
& Innovation Support

# Upcoming Event:

## Webinar

– In Conversation: Intro  
to EDIRI at U of T –

Date: Sept. 21, 2022  
10:30 am - 11:30 am

*In Conversation with...Dr. Nicole Kaniki & Dr. Barbara Fallon*

## VISITING TOPICS IN EQUITY, DIVERSITY & INCLUSION IN RESEARCH AND INNOVATION



### Intro to EDIRI at U Of T



September 21, 2022  
@ 10:30 am-11:30 am



Session Info & Registration:  
[cris.utoronto.ca/event/in-  
conversation-  
intro-to-ediri-at-u-of-t-sept-21-2022](https://cris.utoronto.ca/event/in-conversation-intro-to-ediri-at-u-of-t-sept-21-2022)



UNIVERSITY OF  
TORONTO

Centre for Research  
& Innovation Support

[cris.utoronto.ca/rdf/programs/](https://cris.utoronto.ca/rdf/programs/)



UNIVERSITY OF  
TORONTO

Centre for Research  
& Innovation Support

# Thank you!

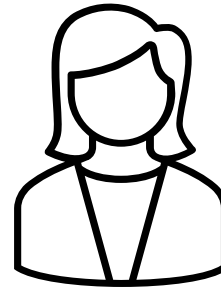
- A link to the recording, presenter slides, and feedback form will be sent out after the session
- Follow-up questions can be addressed to **Keti Dzamova** '[keti.dzamova@utoronto.ca](mailto:keti.dzamova@utoronto.ca)'



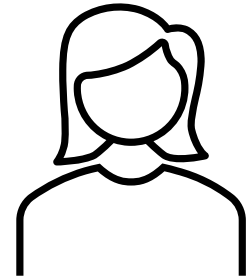
**Aimy Bazylak**



**John Peever**



**Jessica Keating**



**Keti Dzamova**

